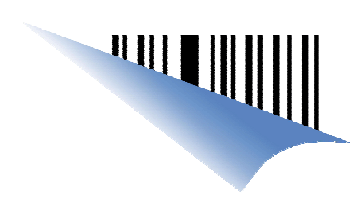




DCS & Labelling Worldwide



Printing Turkish in SAP to SATO Printers

Solutions Analysis

Version 070528-01

By [Chan Kong Hing](#)

© 2007 SATO International Pte Ltd. All rights reserved.
<http://www.satoworldwide.com>
software@sato-int.com



DCS & Labelling Worldwide

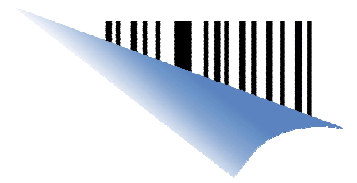
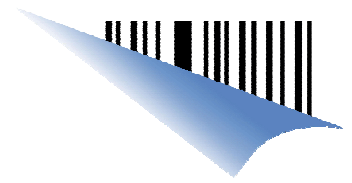


Table of Contents

1.	Introduction.....	3
2.	Printing from SAP.....	3
3.	SBPL Commands	5
	Cartridge built-in TrueType font print command	5



1. Introduction

This document explains how to print Turkish in SAP to SATO Printers (GTe series with English Cartridge)

The **Turkish alphabet** is a variant of the Latin alphabet used for writing the Turkish language, consisting of 29 letters.

These letters are, in the upper case:

A, B, C, Ç, D, E, F, G, Ğ, H, I, İ, J, K, L, M, N, O, Ö, P, R, S, Ş, T, U, Ü, V, Y, Z

and in the lower case:

a, b, c, ç, d, e, f, g, ğ, h, i, j, k, l, m, n, o, ö, p, r, s, ş, t, u, ü, v, y, z.

SATO's GTe series printers support printing of Turkish characters with the following package:

- Printer firmware version : 13.00.00.00
- English Cartridge with Latin1/2/5, Grk, Cyr,Arb character set

2. Printing from SAP

In order to print Turkish from SAP to GTe printer, the SATO Device Type which uses Turkish character set must be provided.

The device type can be downloaded from the following URL:

<http://www.satoworldwide.com/software/doc/deviceTypes.zip>

The device type uses character set 1634 (Printer I9SWIN ISO 8859-9 (Turkey, Latin-5) as depicted below:

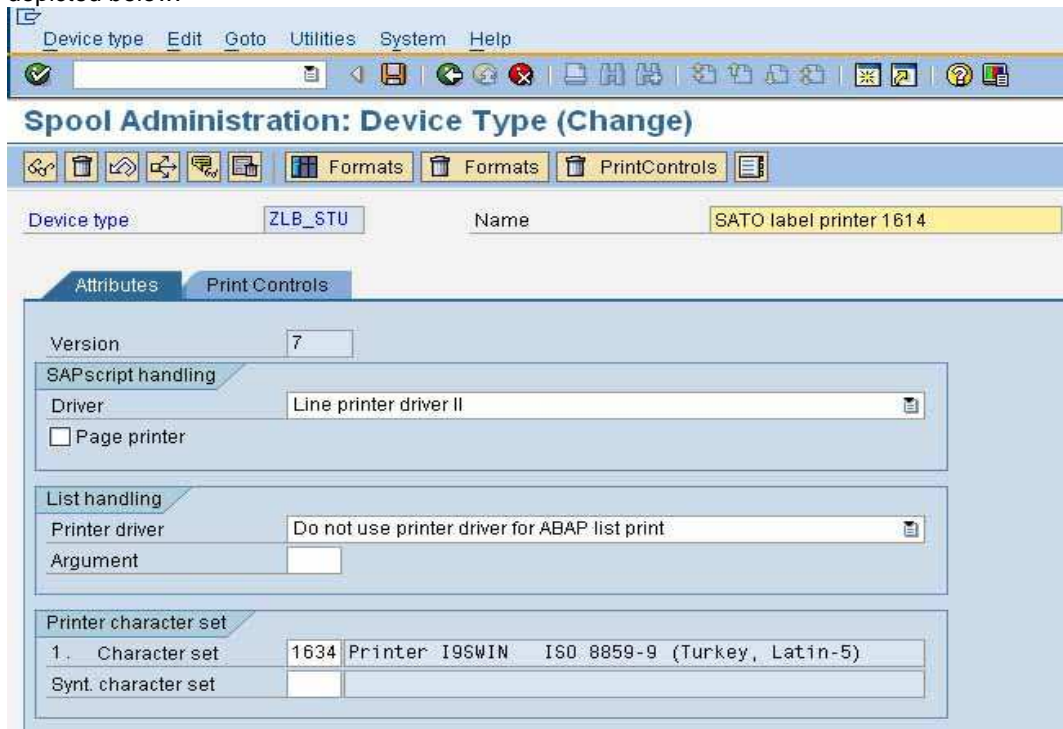
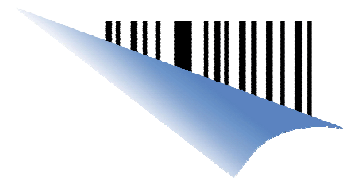


Figure 1 Character Set in Device Type



An example of printing all the Turkish characters is shown below. By applying the output device which uses the Turkish device type, the GT printer can produce the printing output as depicted below:

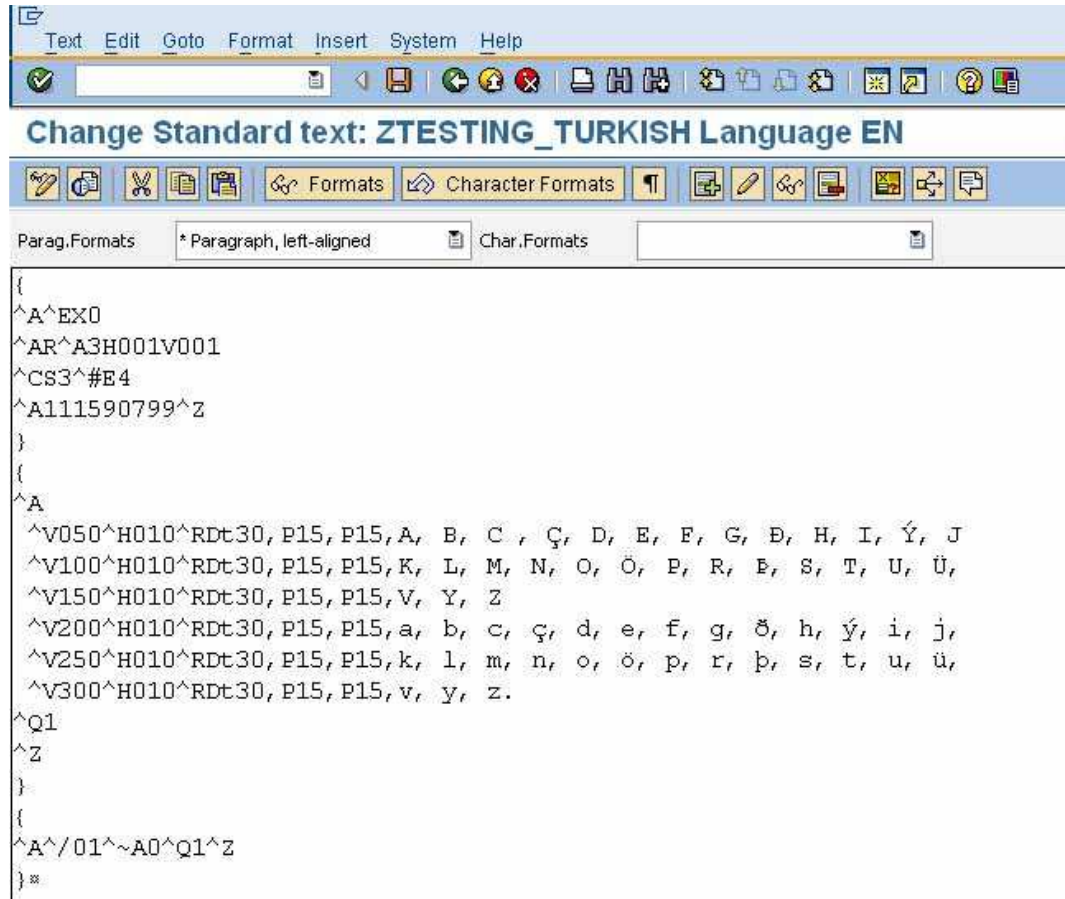
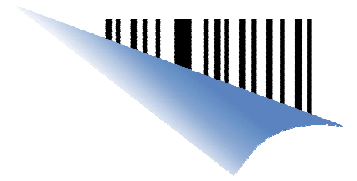


Figure 2 Sample of printing all Turkish characters in SAP



Figure 3 Turkish characters printing output



3.SBPL Commands

The Turkish characters will be printed using the CG Times font in the English Cartridge with **RD** command.

Character set for ISO 8859/9 Latin 5 must be applied in order to print the Turkish.

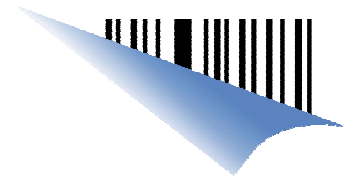
Cartridge built-in TrueType font print command

【Format】

<RD> a b c, d d d, e e e, n ~ n

● Parameter

a 「Font type」	=	C 「MKaiSO-Medium-U(simplified)」
		c 「MHeiS-Bold-U(simplified)」
		K 「HYGungSo-Bold」
		J 「Outline-Kanji(Shift-JIS/JIS)」
		T 「AngsanaUPC」
		F 「FuturaIIBook」
		P 「CG Palacio」
		S 「CG Century Schoolbook」
		G 「CG Triumvirate Condensed」
		V 「Univers Medium」
		t 「CG Times」
b 「Character set」	=	0 w/out specifying character set
		1 「Latin1」 ISO 8859/1 Latin 1
		2 「Latin2」 ISO 8859/2 Latin 2
		3 「Latin5」 ISO 8859/9 Latin 5
		4 「Grk」 CP-737 DOSGreek
		5 「Cyr」 CP-855 DOSCyrillic
		6 「Arb」 CP-864 DOSArabic
		7 「Codepage874」 CP-874 Thai
		8 「CP-850」 CP-850 Multilingual
c 「character style」	=	0 「standard」 Medium
d 「horizontal size」	=	0 0 4 ~ 9 9 9 (dot) / P 0 2 ~ P 9 9 (point)
e 「vertical size」	=	0 0 4 ~ 9 9 9 (dot) / P 0 2 ~ P 9 9 (point)
n 「print data」	=	data

**【Supplementary explanation】**

1. When it is specified in [0], specification without character set, the applied character set will be the one for SATO standard.
2. Possible combination of font type and character set is shown in below table.

Character set	Font type
CP-850	FuturaIIBook CG Palacio CG Century Schoolbook CG Triumvirate Condensed Univers Medium
Codepage874	AngsanaUPC
Latin1	Univers Medium CG Times
Latin2	Univers Medium CG Times
Latin5	Univers Medium CG Times
Grk	Univers Medium CG Times
Cyr	Univers Medium CG Times
Arb	CG Times
No specification	MKaiSO-Medium-U(simplified) MHeiS-Bold-U(traditional) HYGungSo-Bold

** END **